



Andatech[®]

ACCESSPOINT

Industrial Breathalyser



USER MANUAL

INTRODUCTION

Thank you for purchasing the Andatech® AccessPoint.

The Andatech® AccessPoint controls the entry of employees into their workplace using a simple breath alcohol test. This entry point breathalyzer can test up to 12 people in 1 minute, and can be easily installed to turnstiles, automatic doors, speed gates, and other types of access control systems.

Highly sensitive and accurate, the Andatech AccessPoint is effective at helping to enhance and execute workplace OH&S policies efficiently even before an employee steps into the workplace. It is ideal for industries where a strict or zero alcohol tolerance policy is observed, such as factories, construction and mining sites, chemical plants, casinos, workplaces that use heavy machinery, laboratories and hospitals, and stadiums.

Equipped with a replaceable fuel cell sensor module, the Andatech AccessPoint is highly convenient and easy to use and maintain.

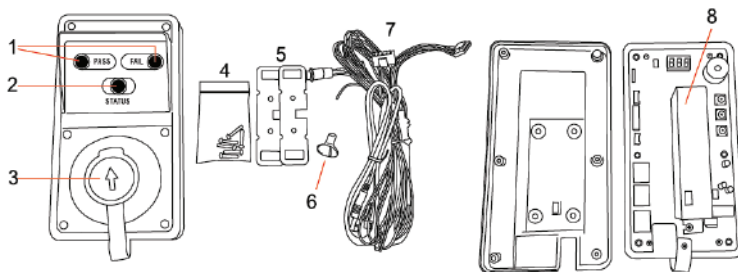
Please read the operation manual and familiarise yourself with the operation instructions before using. Retain this manual for future reference.

CONTENTS

COMPONENTS	3
OPERATING INSTRUCTIONS	4
TROUBLESHOOTING	7
SPECIFICATIONS	7
DISCLAIMERS	8
WARRANTY DETAILS	9
PRODUCT REGISTRATION	11

COMPONENTS

DIAGRAM EXPLANATION



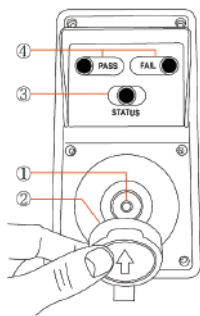
- | | |
|---------------------------|--------------------------------|
| 1 Test result lamp | 5 Brackets |
| 2 Status lamp | 6 Funnel |
| 3 Sampling hole and cover | 7 Cable including power switch |
| 4 Screws | 8 Sensor module |

Contents

1 x Breathalyzer, 1 x connecting cable including power switch, 6 x Screws for assembling,
1 x funnel for sampling hole, 2 x brackets, 1 x manual

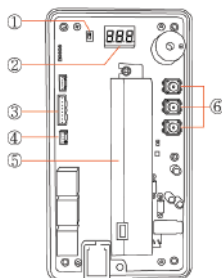
USB cable & Software for PC connecting are sold separately

FUNCTIONAL DESCRIPTION



Front

- 1. Sampling hole**
This is where the user blows into the device.
- 2. Sampling hole cover**
Prevents sensor damage from dust or pollutants in the air.
- 3. STATUS Lamp**
Red LED flickering: Warming up
Green LED on: Ready
Orange LED on: Analyzing
Red LED on: Flow error
- 4. Test Result Lamp**
PASS: Green LED on
FAIL: Red LED on
The PASS range can be adjusted from 0.01 to 0.09%BAC.

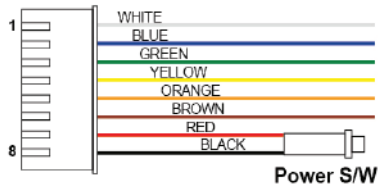


Inside

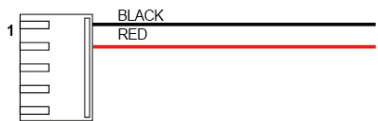
- 1. Normal/PC mode switch**
Normal mode
PC mode: device is controlled by PC (Optional)
- 2. FND display**
Displays warning and other error messages.
- 3. 8 pin connector**
Connector for power and signal.
- 4. 4 pin connector**
USB connector for connecting to PC.
- 5. Replaceable fuel cell sensor module**
- 6. Function switches**
Used for setting different functions

COMPONENTS

DESCRIPTION OF CABLES AND CONNECTORS



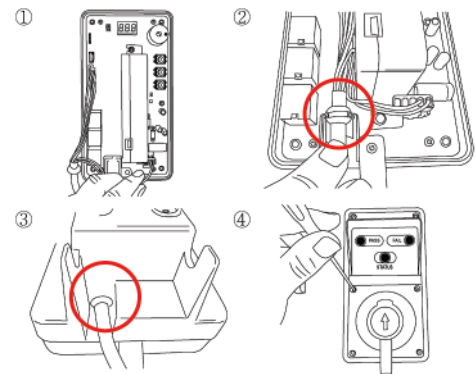
PIN	PIN Description	Wire
1	DOOR INPUT (OPEN/CLOSE)	WHITE
2	PASS OUT (+)	BLUE
3	FAIL OUT (+)	GREEN
4	POWER ON/OFF OUT (+/-)	YELLOW
5	READY OUT	ORANGE
6	END OF TEST OUT	BROWN
7		RED
8		BLACK



PIN	PIN Description	Wire
1	POWER GND	BLACK
2	POWER +12V	RED

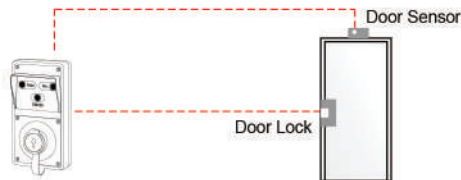
OPERATING INSTRUCTIONS

HOW TO ASSEMBLE



1. Connect the cables as shown.
2. Make sure the sensor module is connected securely.
3. Follow the diagram's positioning of cables.
4. Assemble the front and back using the screws.
5. Connect the cable with the auto door's sensor and lock.

Installation Reference



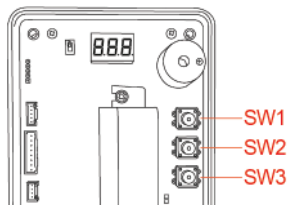
OPERATING INSTRUCTIONS

HOW TO USE

1. Open the sampling hole cover of the device.
2. Make sure the STATUS lamp is green. This indicates that it is ready to take a test.
3. Blow into the sampling hole.
4. Depending on the test results, the Pass or Fail lamp will light up.

* If the breath sample is not strong enough or is insufficient for an analysis, the status lamp will light up in red. Please wait until the status lamp turns to green and then take another test.

HOW TO SET BUZZER, AUTOPOWER & PASS LEVEL



1. Turn off and open up the back of the device.
2. Hold down "SW1" and "SW2" at the same time for 4 seconds. Upon releasing them, the FND display will turn on and "bUZ" will be displayed.
3. Push "SW1" to access the setting functions. The words bUZ, FrE and Lo will cycle on the FND display.
4. Press "SW2" when bUZ, FrE or Lo displays on the screen to access that setting.



bUZ - Buzzer on/off

- The last saved setting - either "bon" (buzzer on) or "bof" (buzzer off) - will display.
- Press "SW2" to change the setting between "bon" or "bof".
- Press "SW1" to save the current setting and return to the previous menu.



FrE - Auto power on/off

- The last saved setting - either "Fon" (device will not switch off automatically) or "Fof" (device turns off automatically after 15 minutes unless operating) - will display.
- Press "SW2" to change the setting between "Fon" or "Fof".
- Press "SW1" to save the current setting and return to the previous menu.



Lo - Pass level (0.01 to 0.09%BAC)

- Lo.2 (i.e. pass level is 0.02%BAC) or the last saved setting will display.

OPERATING INSTRUCTIONS

- Press "SW2" to change the setting to "LO.3", "LO.4" and etc.
- Press "SW1" to save the current setting and return to the previous menu.

Note: This level can be set from 0.01%BAC (LO.1) ~ 0.09%BAC (LO.9).

0.01~0.09%BAC (= 0.10~0.90g/L= 0.05~0.45mg/L)

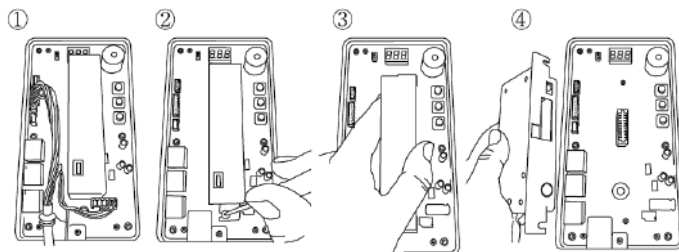
5. At any time, you can also press and hold "SW1" and "SW2" at the same time for 4 seconds to save the setting and exit to sampling mode.

HOW TO CHECK THE NUMBER OF TESTS

Turn off the device, then press "SW1" for a moment. The number on the display will indicate how many tests the device has taken.

e.g.) 000= less than 10 tests
001= above 10 tests
010= above 100 tests
100= above 1000 tests
999= above 9990 tests

HOW TO REPLACE SENSOR



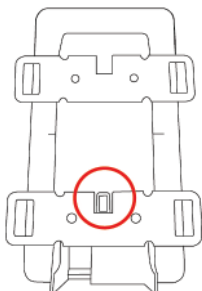
CAUTION! Before replacing the sensor module, unplug the power cable. Not doing so may damage the sensor module.

You should only replace the sensor with that provided by the manufacturer.

Before replacing the sensor, turn the power off and unscrew the top and bottom, then replace with the new sensor.

HOW TO USE BRACKETS

Make sure that the brackets are positioned as shown below:



TROUBLESHOOTING

1. The Andatech AccessPoint cannot power on

Reason: Power supply is not connected correctly.

Solution: Check that the red cable voltage is 12V.

If problem still persists, please contact the manufacturer.

2. Status lamp is red

Reason: Breath sampling is not strong enough for a breath analysis (Flow error).

Solution: Wait until the Status lamp is green, then blow steadily into the sampling hole.

3. All 3 lamps (Status, Pass and Fail) keep blinking

Reason: White cable is connected to the door sensor or door is not closed properly.

Solution: Check the door sensor and whether the door is opened or closed.

4. Analyzing and showing result is very slow, or no result provided after breath sample:

Reason: The AccessPoint sensor module needs calibration or replacing.

If the unit is not providing a result, the flow sensor in the sensor module may be damaged.

Solution: Please contact the manufacturer.

SPECIFICATIONS

Indication of B.A.C.	Test result indicated by LED display PASS : Indicate Green Lamp FAIL : Indicate Red Lamp (Level of PASS can be adjustable)
Accuracy	±0.005%BAC at 0.050%BAC
Sensor	Replaceable fuel cell type alcohol sensor
Mouthpiece	Not required
Power supply	DC12V 1.5A
Warm up time	3 seconds ~ 4 minutes
Response time	Within 3 seconds at 0.000%BAC Within 10 seconds at 0.100%BAC
Calibration interval	Recommended every 6 months
Ambient conditions	Storage: 0 to 50°C / Operation: 5 to 40°C
Dimensions	206 (height) × 108 (width) × 37 (thickness) mm
Weight	674g

DISCLAIMERS

This product must be used strictly in accordance with the instructions in this manual.

This product is intended to provide the user with an indication of alcohol on the breath. However, neither the manufacturer nor the supplier gives any warranty (express or implied) that the product can give any indication of blood alcohol level.

A person's BAC (Blood Alcohol Concentration) can only be accurately measured by the administration of a blood test. This product only measures breath alcohol content which, in turn, only gives an approximate indication of blood alcohol concentration.

In these circumstances the user of this product should not rely on the information provided thereby as an accurate indication of their blood alcohol concentration or of their level of intoxication or of their fitness to drive and in particular should not take any action in reliance on such information as the product can provide no more than an indication of alcohol on the breath.

If the user of this product makes any decision or takes any action based on the use of the product such decision or such action shall be at the sole risk of the user and neither the manufacturer nor the supplier assumes any responsibility for such decision or action.

In particular, neither the manufacturer nor the supplier shall be in any way liable if the user of the product asserts that the product led them to believe they were fit to operate a motor vehicle and are subsequently found not to be so fit.

THINGS TO REMEMBER

- Always wait a minimum of 15 minutes after your last drink before testing.
- NEVER take a sip of alcohol and blow immediately into the device.
- Ignoring these two points WILL cause damage to the unit that is NOT covered by warranty.

WARRANTY DETAILS



It is our aim to provide you with quality products that you can trust. Our products come with guarantees that cannot be excluded under the Australian Consumer Law. You are entitled to a replacement or a refund for a major failure and for compensation for any other reasonably foreseeable loss or damage.

You are also entitled to have the goods repaired or replaced if the goods fail to be of acceptable quality and the failure does not amount to a major failure.

The Guarantee

The product is guaranteed to be free from defects in workmanship and parts for a period of 1 year from the date of purchase. Defects that occur within this warranty period, under normal use and care, will be repaired, replaced or refunded at our discretion, solely at our option with no charge for parts and labour. The benefits conferred by this warranty are in addition to all rights and remedies in respect of the product that the consumer has under the Trade Practices Act and similar state laws.

Proof of Purchase

This warranty is valid for the original purchase and is not transferable. Please keep your purchase docket or receipt as proof of purchase and as proof of date on which the purchase was made. The purchase docket (or a copy) or receipt must be presented with the warranty when making a claim under this warranty.

Service during the Warranty Period

To claim for warranty, contact us on 1300 800 200 or support@andatech.com.au to get an RA# (Return Authorisation Number). Ensure that the RA# is clearly stated on the outside of the packaging and that the product is properly packaged so that no damage occurs to the product during transit. Shipping of the product back to us for warranty will be at your cost. A product return without the RA# or proof of purchase will not be accepted.

Extent of Warranty

This warranty is limited to defects in workmanship or parts. All defective products or parts will be repaired or replaced. This warranty does not cover manuals and packaging.

Normal Wear and Tear

This warranty does not cover normal wear and tear to the product or parts.

Exclusions

This warranty does not cover:

- Calibration costs.
- Any defect caused by an accident, misuse, abuse, improper operation, lack of reasonable care, unauthorised modification, loss of parts, tampering or attempted repair by a person not authorised by the distributor.
- Any product that has been damaged by a lightning strike either directly or indirectly or a main power surge or liquid ingress.
- The product if it is located outside of Australia.
- Any damage caused by improper power input or improper cable connection.

WARRANTY

The manufacturer warrants for 1 year from the date of purchase, the product to be free from defects in workmanship or material (excluding recalibration) under normal use. The manufacturer's obligation under this warranty is limited to replacing, adjusting or repairing the unit if returned along with proof of purchase. This warranty is void if the unit has been tampered with, damaged or abused in any way.

To register your warranty online, go to my.andatech.com.au

CALIBRATION AND SERVICE

Andatech recommends the Andatech® AccessPoint be calibrated every 6 months.

For calibration and technical support, please go to my.andatech.com.au or contact:

Andatech

Hotline: 1300 800 200 (Within Australia)
+613 8899 6900 (International)

Website: www.andatech.com.au

PRODUCT REGISTRATION

Visit **my.andatech.com.au** to register your warranty online and receive calibration reminders. Alternatively, complete this form and forward to the address below with a copy of your proof of purchase:

Andatech
PO BOX 3038, Nunawading VIC 3131 Australia.

PRODUCT: ANDATECH® ACCESSPOINT SERIAL NUMBER:

DATE OF PURCHASE:

PLACE OF PURCHASE:

SURNAME:

GIVEN NAME:

ADDRESS:

SUBURB:

POSTCODE:

STATE:

CONTACT NO.:

EMAIL:





Andatech Pty Ltd
www.andatech.com.au
1300 800 200